



# GMT MONTHLY MEMBERSHIP PROGRESS REPORT

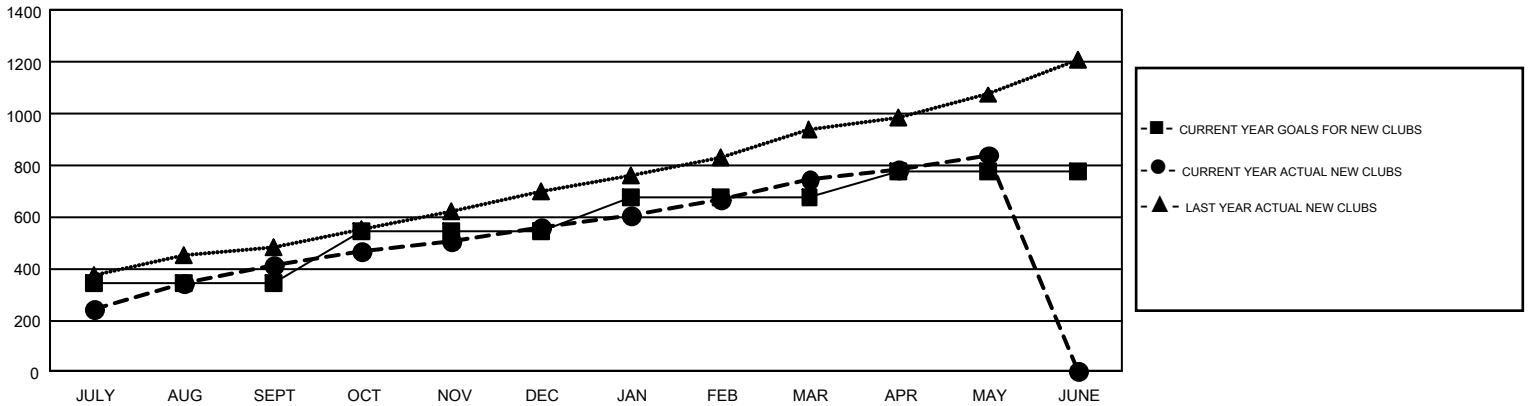
Results as of: 5/31/2019

## GAT Constitutional Area 6

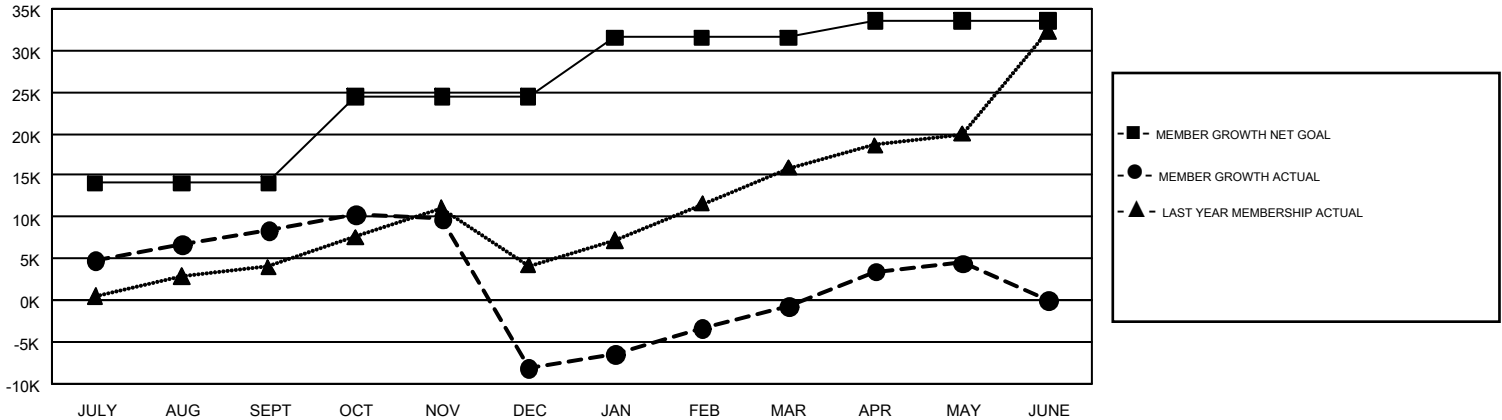
REPORT DOES NOT INCLUDE CLUBS IN UNDISTRICTED AREAS.

Clubs				Members			
RESULTS FOR 2018-2019				RESULTS FOR 2018-2019			
QUARTER	NEW CLUB GOAL	NEW CLUBS	DROPPED CLUBS	QUARTER	MEMBER GROWTH NET GOAL	MEMBER GROWTH ACTUAL	DROPPED MEMBERS ACTUAL (including transfers)
JULY/AUG/SEPT	346	413	66	JULY/AUG/SEPT	14,055	18,889	9,297
OCT/NOV/DEC	195	145	434	OCT/NOV/DEC	10,376	10,391	26,142
JAN/FEB/MAR	138	185	75	JAN/FEB/MAR	7,106	16,040	5,516
APR/MAY/JUNE	98	99	12	APR/MAY/JUNE	2,012	13,763	7,520

GOALS AND ACTUAL NEW CLUBS CUMULATIVE



GOALS AND ACTUAL MEMBERS CUMULATIVE



DROPPED CLUBS: 587	5,925 CLUBS OF 10,514 ADDED 1 OR MORE NEW MEMBERS	<b>GENDER DISTRIBUTION</b> MALE                    270,394 (73.77%) FEMALE                 96,137 (26.23%)
<b>DROPPED MEMBERS</b> DECEASED                    783 CLUB CANCELLED            14,428 OTHER                         33,261 <b>TOTAL</b> 48,472	<a href="#">CLICK HERE FOR CUMULATIVE MEMBERSHIP DATA</a>	TOTAL FAMILY UNIT MEMBERS                    164,788 FAMILY MEMBERS PAYING HALF DUES                    98,856